

Anticon® with PAT

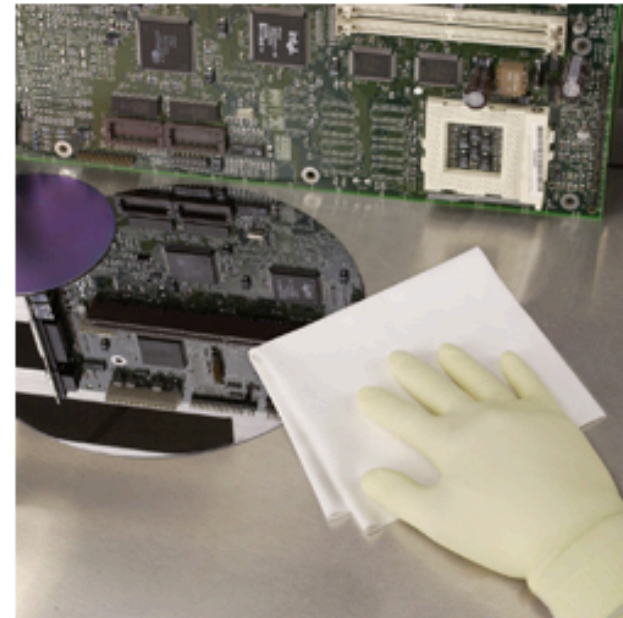
In today's critical environments, the challenge is not only to produce a wipe that does not contaminate the cleanroom, but to produce one proven to remove surface contaminants. Contec's Anticon wipes with PAT technology meet that challenge. Laundered and packaged in Contec's ISO 4 cleanroom, these wipes exhibit minimal levels of particles, fibers, ions and extractables. Using a patented treatment that permanently bonds to the wipe fabric, PAT treated wipes trap and retain particles better than traditional cleanroom wipes. This performance is enhanced in the presence of alcohol and other solvents used in cleanroom cleaning. Simply put, Anticon wipes with PAT technology leave your cleanroom cleaner.

Features & Benefits

- Traps 35 times more particles than competitive wipes without PAT to leave surfaces cleaner
- Retains 95% of the particles trapped to dramatically reduce the risk of recontamination
- Exhibits lower levels of liquid particles, airborne particles and fibers to prevent the introduction of contaminants into the cleanroom
- Attracts more contaminants such as iron, titanium dioxide, titanium, silicon, zinc, aluminum, tungsten, and copper to improve yields
- Traps particles in solution better than competitive wipers for cleaner surfaces
- PAT benefits are improved and enhanced with use of solvents

Applications

- Critical cleaning



Literature: [Anticon with PAT](#)

Part #	Description	Packaging	SDS	Sample
493200-529	9" x 9" (23 x 23cm) White Magic with PAT wipes, bulk	150 wipes/bag; 14 bags/case		



ANTICON
BY CONTEC

WITH PARTICLE ATTRACTION TECHNOLOGY



Anticon® with PAT™

Traps and retains 35 times more particles

Retains 95% of particles trapped

PAT benefits are enhanced with the use of solvents

Cleanroom Laundered

Anticon® with PAT

Particle Attraction Technology traps and retains 35 times more particles

In today's critical environments, the challenge is not only to produce a wipe that does not contaminate the cleanroom, but to produce one proven to remove surface contaminants. Contec's Anticon wipes with PAT technology meet that challenge.

Laundered and packaged in Contec's ISO 4 cleanroom, these wipes exhibit minimal levels of particles, fibers, ions and extractables.

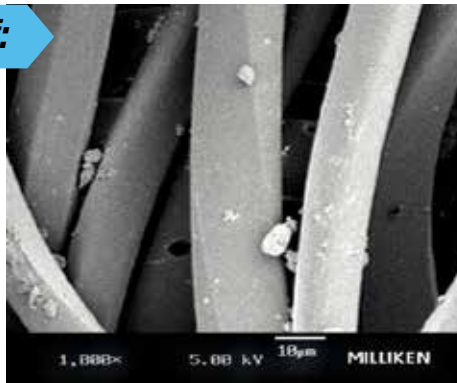
Using a patented treatment that permanently bonds to the wipe fabric, PAT treated wipes trap and retain particles better than traditional cleanroom wipes. This performance is enhanced in the presence of alcohol and other solvents used in cleanroom cleaning.

Simply put, Anticon wipes with PAT technology leave your cleanroom cleaner.

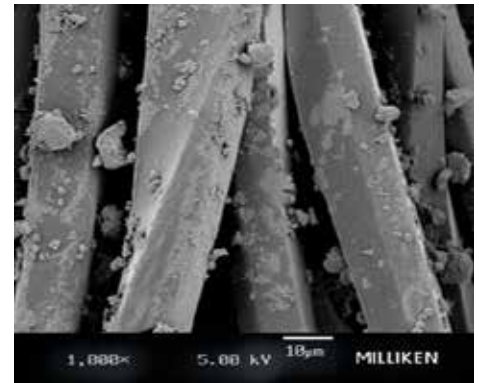
FEATURES & BENEFITS

- Traps 35 times more particles than competitive wipes without PAT to leave surfaces cleaner
- Retains 95% of the particles trapped to dramatically reduce the risk of recontamination
- Exhibits lower levels of liquid particles, airborne particles and fibers to prevent the introduction of contaminants into the cleanroom
- Attracts more contaminants such as iron, titanium dioxide, titanium, silicon, zinc, aluminum, tungsten, and copper to improve yields
- Traps particles in solution better than competitive wipers for cleaner surfaces
- PAT benefits are improved and enhanced with use of solvents

Here's the proof:



Without PAT Wipe retains far fewer particles—particles that are left behind on surfaces.



With PAT Wipe attracts and retains 35 times more particles, leaving surfaces cleaner.

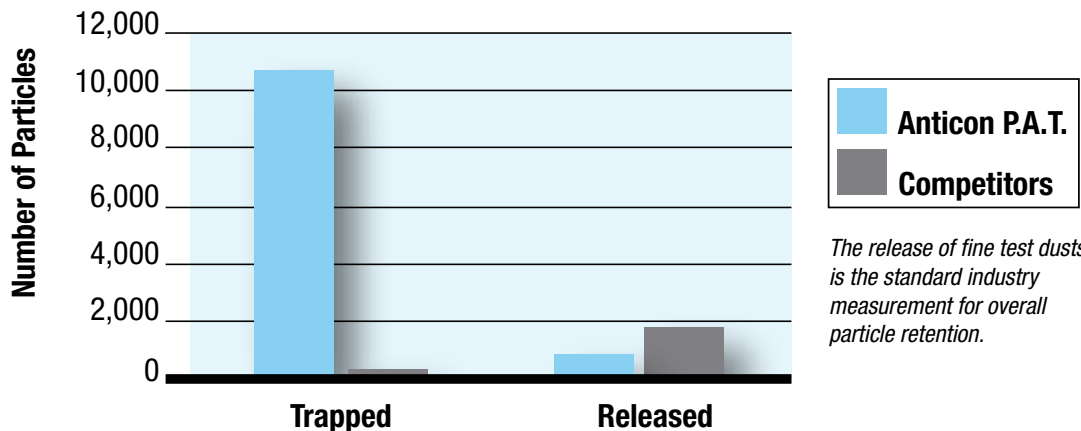


ANTICON®
BY CONTEC

WITH PARTICLE ATTRACTION TECHNOLOGY

Anticon® wipes with PAT technology from Contec trap and retain more particles, leaving your cleanroom cleaner.

Here's the proof:



The release of fine test dusts is the standard industry measurement for overall particle retention.

	Trapped	Std. Dev.	Released	Std. Dev.
Anticon PAT	10,666	2,394	575	485
Competitors	301	378	1,764	1,443

If you're not using Anticon® wipes with Particle Attraction Technology, you're leaving too much on the table. For more information on putting Anticon wipes with PAT to work for you, call 1-800-762-3427 or e-mail us at anticon@contecinc.com.



ORDERING INFORMATION

Part #	Description	Packaging
493200-526	6" x 6" (15 x 15cm) White Magic with PAT wipes, bulk	300 wipes/bag; 18 bags/case
493200-529	9" x 9" (23 x 23cm) White Magic with PAT wipes, bulk	150 wipes/bag; 14 bags/case
493200-538	12" x 12" (30.5 x 30.5cm) White Magic with PAT wipes, bulk	100 wipes/bag; 10 bags/case
493200-534	9" x 9" (23 x 23cm) White Magic with PAT wipes, 70% IPA/ 30% DI Water	50 wipes/bag; 16 bags/case

KEY: Bulk= Advantage Pack

ANT011 011614